

EPIC
DIABETES
CONFERENCE

MARCH 3, 2018 | SHERATON DOWNTOWN DENVER

EMPOWERING PATIENTS
FOR INDIVIDUALIZED CARE

Barbara Davis Center for Diabetes
Children's Diabetes Foundation

EPIC: Empowering YOU

WELCOME

Sarit Polsky, MD, MPH
Assistant Professor of Medicine and Pediatrics
Director of the Pregnancy and Women's Health Clinic
Barbara Davis Center for Diabetes
University of Colorado Denver

Barbara Davis Center for Diabetes
Children's Diabetes Foundation

Diabetes Treatments

1920s 30s 40s 50s 60s 70s 80s 90s 2000s 2010 to present

Metformin

Sulphonylureas

α-glucosidase inhibitors

TZDs

Meglitinide Derivatives

GLP-1 agonists

SGLT-2 inhibitors

DPP-4 inhibitors

amylinomimetics

Bromocriptine

Colesevelam

Sibutramine (withdrawn Europe)

Barbara Davis Center for Diabetes
Children's Diabetes Foundation

Glucose Monitoring

1920s 30s 40s 50s 60s 70s 80s 90s 2000s 2010 to present

Barbara Davis Center for Diabetes
Children's Diabetes Foundation

Insulin Pumps

1920s 30s 40s 50s 60s 70s 80s 90s 2000s 2010 to present

Diabetes: The Here and Now

- ~30 million Americans have diabetes (9.4%)
- ~84 million Americans have prediabetes

Worldwide: 108 M → 422 M
1980 2014

• People with diabetes live longer now.

From the CDC:

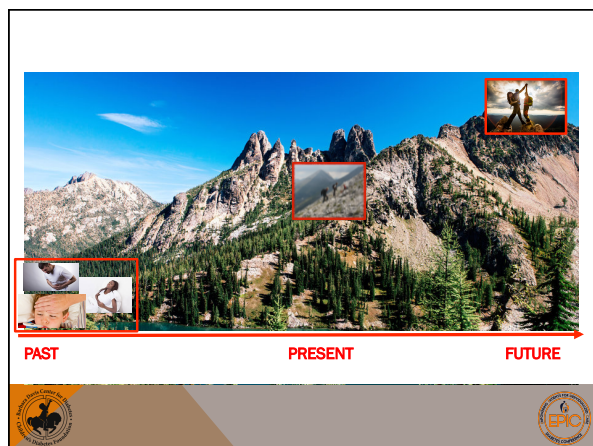
Age-Adjusted Prevalence of Diagnosed Diabetes Among US Adults
1994

Age-Adjusted Prevalence of Diagnosed Diabetes Among US Adults
2015

Diabetes: The Here and Now

- People with diabetes today can live a full life.
- Children can participate in school activities.
- Adults can participate in work activities.
- Healthier and happier pregnancies and children.
- Lifestyle still plays a role for ALL types of diabetes: weight, nutrition, exercise.

Diabetes Resources



What's on the Horizon?

- Newer, fasting insulins
- New medications (new drug classes)
- Closing the loop
- Further international collaborations in research and development
- Digital health solutions
- Preventing and better treating complications
- Cure?

CONFERENCE WORKSHOPS

ADULT TRACK	
<p style="text-align: center;">Governor's Square 14</p> <p>9:30-10:30 & 10:45-11:45 Hypoglycemia 12:45-1:45 Getting Older with Diabetes</p>	<p style="text-align: center;">Governor's Square 15</p> <p>9:30-10:30 & 10:45-11:45 Hyperglycemia 12:45-1:45 Emotional & Mental Health</p>
PEDIATRIC TRACK	
<p style="text-align: center;">Plaza A</p> <p>9:30-10:30 & 10:45-11:45 Diabetes in School, Camps, Scholarships, CDN 12:45-1:45 Puberty & Transition to Adult Medicine</p>	<p style="text-align: center;">Plaza D</p> <p>9:30-10:30 & 10:45-11:45 Emotional & Mental Health 12:45-1:45 Finding & Treating Autoimmune Diseases</p>

www.EPICconferences.org

PRESENTED BY:

**Barbara Davis Center for Diabetes
and the
Children's Diabetes Foundation**

#EPICconf2018
www.EPICconferences.org

FOLLOW US ON SOCIAL MEDIA!

 EPIC Conference

 @EPICconference

 #EPICconf2018 
www.EPICconferences.org

FOLLOW CDF ON SOCIAL MEDIA!

 Children's Diabetes Foundation



 @ChldrnsDiabetes

 @cdf_cares

 #EPICconf2018 
www.EPICconferences.org

FEELING LOW?

**Visit the
Emergency Low Blood Sugar Station
at the check-in desk**

 #EPICconf2018 
www.EPICconferences.org

FREE WIFI FOR ALL ATTENDEES

**Network:
Sheraton Meeting Room
Passcode:
EPICconf2018**

 #EPICconf2018 
www.EPICconferences.org




Barbara Davis
Center for Diabetes
UNIVERSITY OF COLORADO
ANSCHUTZ MEDICAL CAMPUS

www.BarbaraDavisCenter.org
303-724-2323



#EPICconf2018
www.EPICconferences.org




DONATIONS APPRECIATED!

Please consider making a donation to:
Children's Diabetes Foundation
to support this conference in future years.

VISIT THE CDF BOOTH TODAY!



#EPICconf2018
www.EPICconferences.org



2018 ATDC CONFERENCE
(PRACTICAL WAYS TO **A**CHIEVE **T**ARGETS IN **D**IABETES **C**CARE)

Conference for healthcare providers
When: July 12-15, 2018
Where: Keystone, CO
Register now online:
www.regonline.com/atdc



www.ATDCconference.com

KINGS SOOPERS' RELOADABLE GIFT CARDS



- \$5 preloaded
- Reload with \$200+ the first time to start donating 5% to the CDF
- All amounts after the first \$200 will donate 5%



#EPICconf2018
www.EPICconferences.org



THANK YOU TO OUR SPONSOR!

SANOFI



#EPIConf2018

www.EPIConferences.org



Thank you

BDC Staff:
Christie, Anne, and Sandy

Speakers from BDC and community practices

CDF Staff:
Dana Davis, Amanda, Mattie, Bradley, and Ben

Sponsors: King Soopers donated \$5 gift cards in your gift bags



Namaste!

www.EPIConferences.org

